



MIDAIR COLLISION AVOIDANCE



TRAVIS AFB
CA

MAY 2013

Contact Information

60th Air Mobility Wing

Flight Safety Office (707) 424-1115

Fax (707) 424-1123

Airfield Management (707) 424-0028

Tower Chief Controller (707) 424-3229

RAPCON Chief Controller (707) 424-2550

Airfield Operations Flight Commander (707) 424-0144

FAA Sacramento Flight Standards District Office

http://www.faa.gov/about/office_org/field_offices/fsdo/sac/

7:30am to 4:00pm (Monday-Friday) / visit by appointment only

1102 Corporate Way, Suite 200

Sacramento, CA 95831

Phone (916) 422-0272

FAX (916) 422-0462



Travis Airspace Description

The airspace serviced by Travis Radar Approach Control (RAPCON) is used by military aircraft operating in this area, along with IFR and numerous VFR aircraft transiting Buchanan Field (Concord), Napa County, Nut Tree, Yolo and four other local airports. This traffic leads to an increased potential for midair collisions in the Travis AFB area of operations.

Travis AFB's mission is to provide total global mobility via airlift support and refueling capabilities worldwide. However, there are frequent training flights in the local area by C-5s, KC-10s, E-6s, and C-17s. In addition to these locally based aircraft, transiting aircraft such as the C-130, KC-135, MC-12 and T-38 fly approaches at Travis from a variety of directions, airspeeds and altitudes ranging from the surface to 10,000' MSL. Commercial "heavy" airframes, including the Boeing 747 and 757, routinely fly into and out of Travis AFB, further increasing the potential threat to midair collisions.

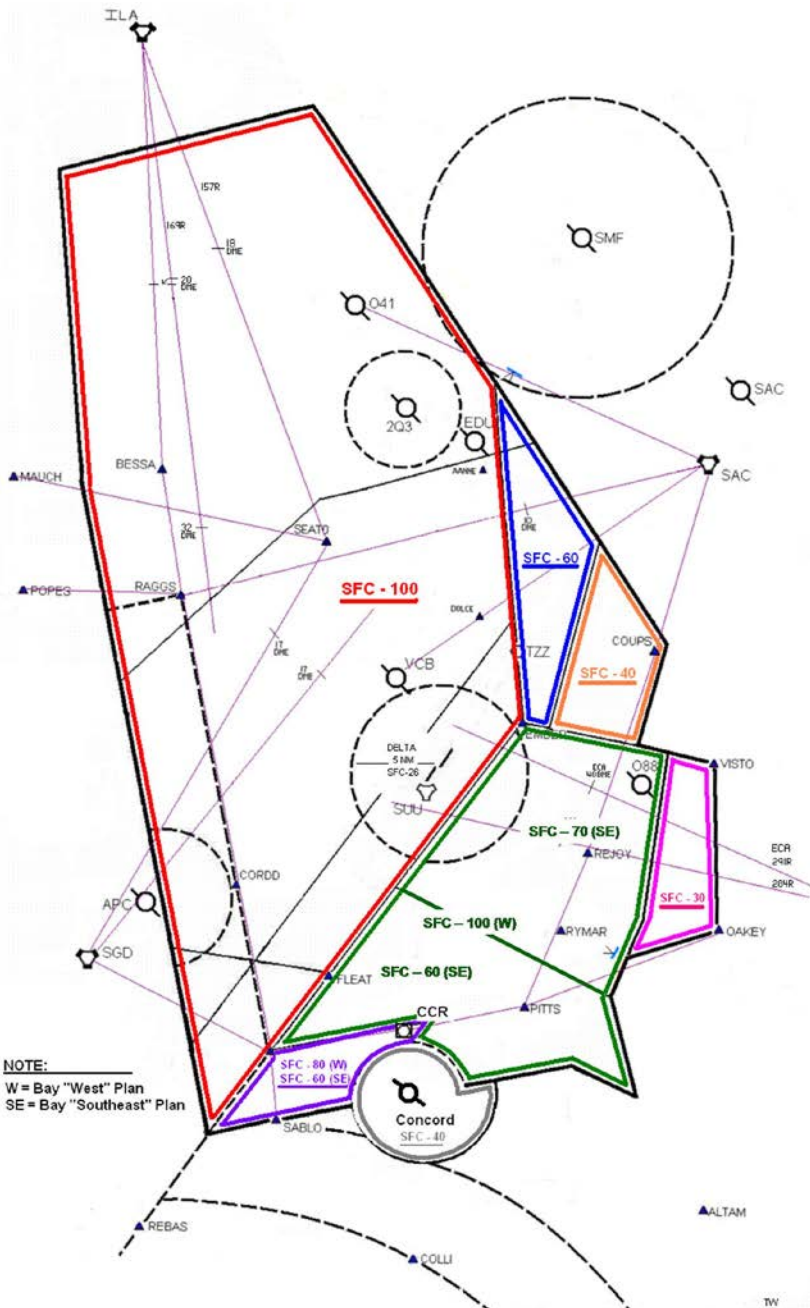
Travis Approach and the Travis Control Tower operate 24 hours a day, 365 days a year. RADAR flight following and traffic advisories are available to aircraft operating north of V-150 below 5,000' MSL on 128.4 MHz (UHF 294.7) and above 5,000' MSL on 126.6 MHz (UHF 291.0). Operating south of V-150 on 119.9 MHz (UHF 322.325). The tower can provide service to aircraft flying in class D airspace on 120.75 MHz (UHF 254.4). Automatic Terminal Information Service (ATIS), is available on 135.55 MHz (UHF 292.125).

The majority of military traffic in the alert area (A-682) are in the "Heavy" category. Extreme caution should be exercised when flying in this area due to the wake turbulence these aircraft generate. A-682 lateral boundaries are depicted in yellow on the maps on the following pages. The vertical limits extend up to 6,000' MSL north of Travis' extended runway centerline and 3,000' MSL to the south. The radar and overhead patterns are contained within its limits.

If you have any questions about flying in the Travis area contact the 60th Air Mobility Wing Flight Safety Office at (707) 424-1115 / 5437.

For more information regarding Midair Collision Avoidance (MACA) visit <http://www.seeandavoid.org> and the Travis AFB Public MACA website at <http://www.travis.af.mil/library/maca.asp>

RAPCON Designated Airspace



Travis Airspace

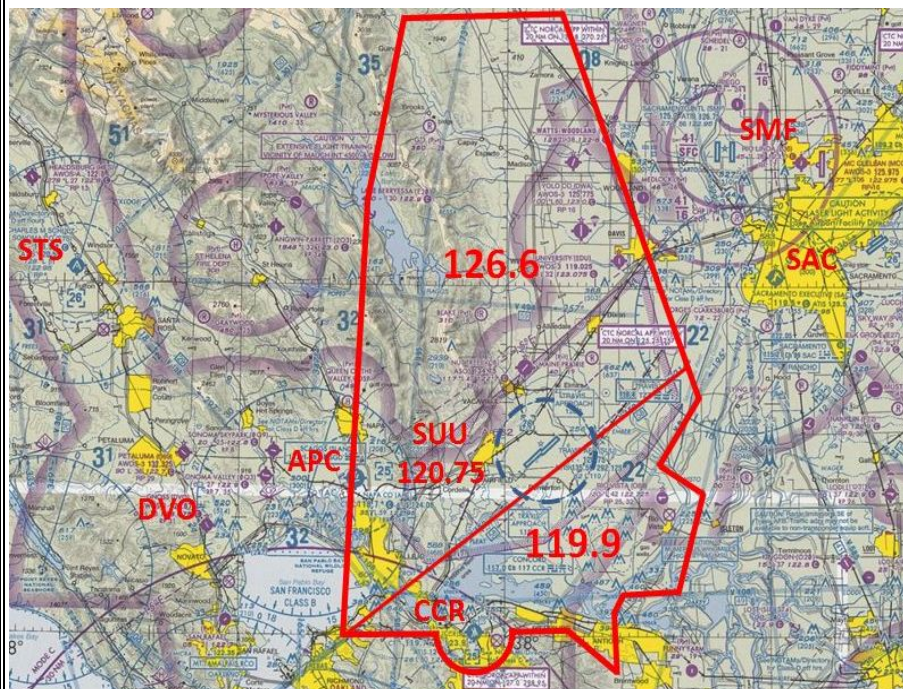
Travis Approach Class E Airspace

Surface to 10,000 MSL: VFR Flight Following Available

Contact Travis APP:

126.6 - North of V150 airway

119.9 - South of V150 airway



Travis Class D Airspace

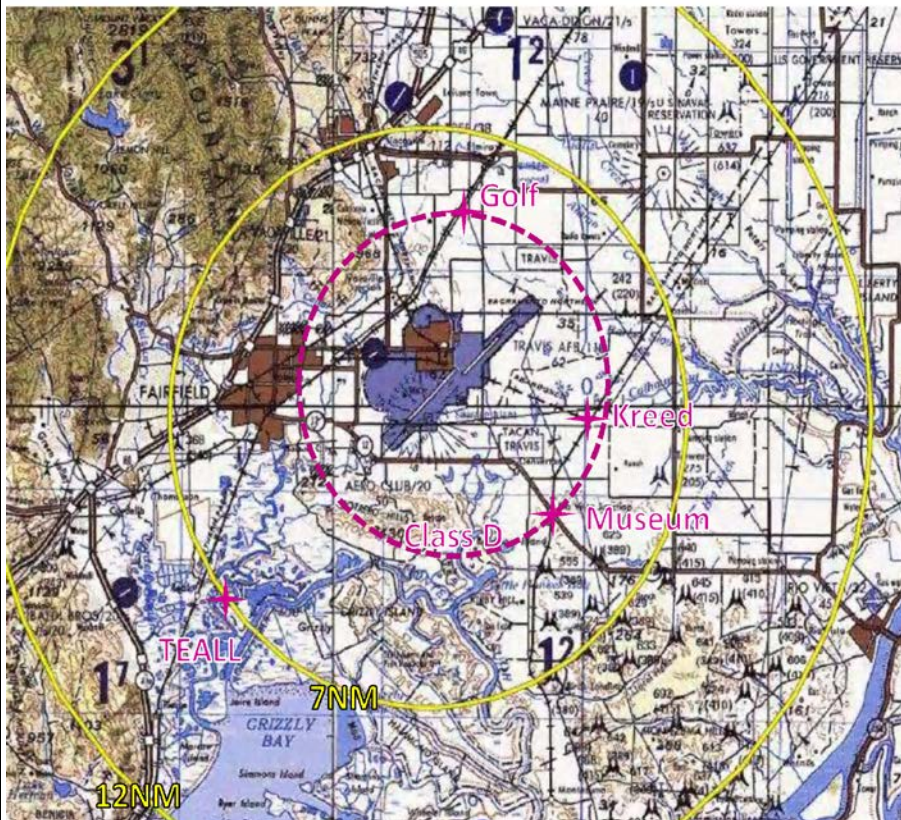
Surface to 2,600 ft MSL within 4.3 NM of Travis AFB

Remain outside Class D unless approved by Travis Tower

Travis Tower – 120.75

Travis Tactical Reporting Points

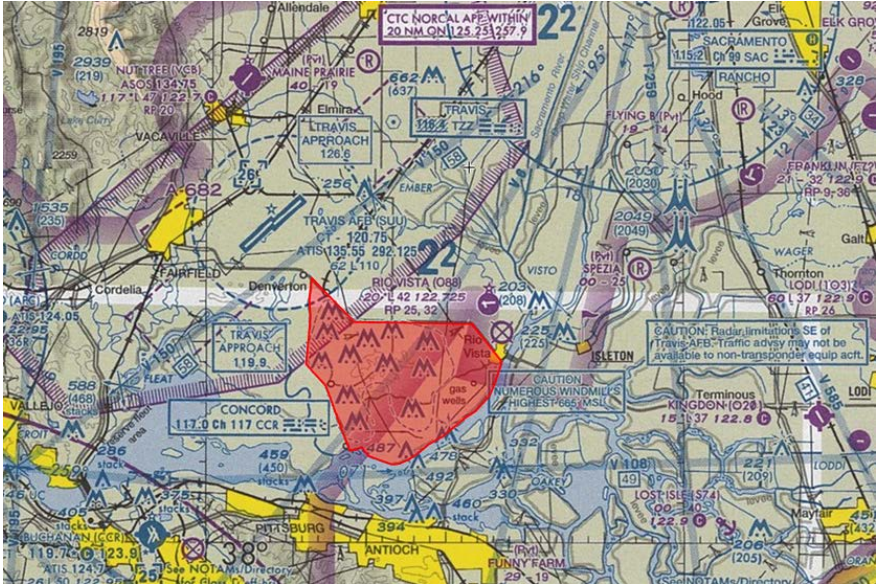
Golf	Kreed	Museum	TEALL
SUU/355/005	SUU/074/004	SUU/110/004	SUU/212/007
N38 19 37.9 W121 55 23.0	N38 14 40.2 W121 51 15.0	N38 12 25.3 W121 52 30.1	N38 10 08.0 W122 03 24.2
Golf Course	Road Intersection	Train Museum	ATC Waypoint



Expect random maneuvering over the top of and in the vicinity of all tactical reporting points by large aircraft from 1,100' MSL up to 10,000' MSL

High rate descents of up to 10,000 fpm are possible in the vicinity of all tactical points and Travis AFB.

Travis AFB RADAR Limitation



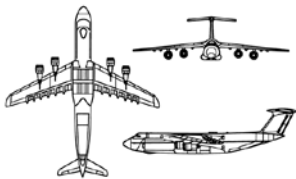
The wind farms southeast of Travis AFB interfere with the Travis ATC radar. In the area shown above, *you cannot be seen on radar if you are not squawking!* Please squawk VFR or contact Travis Approach Control on 119.9 for flight following.

Bottom line: Squawking, even if it is 1200, will make you visible on the Travis Approach Control radar when you are over the wind farms.

BE SEEN!

Travis AFB Military Aircraft

Lockheed C-5
'Galaxy'



Final Approach Speed: 125 Kts.
Radar Pattern Speed: 210 Kts.
Gross Wt: 769,000
Caution Wake Turbulence
Call Signs: *FRED, HEFTY, REACH*

McDonald-Douglas
KC-10
'Extender'



Final Approach Speed: 140 Kts.
Radar Pattern Speed: 210 Kts.
Gross Wt: 590,000
Caution Wake Turbulence
Call Signs: *EXTENDER, GUCCI, QUEST, ORCA, TOGA, REACH*

Boeing C-17
'Globemaster III'



Final Approach Speed: 125 Kts.
Radar Pattern Speed: 210 Kts.
Gross Wt: 585,000
Caution Wake Turbulence
Call Signs: *BEE-LINER, TAHOE, REACH*

Boeing E-6
'Mercury'



Final Approach Speed: 125 Kts.
Radar Pattern Speed: 210 Kts.
Gross Wt: 342,000
Caution Wake Turbulence
Call Signs: *(Varies Daily)*

In-Flight Guidance

BE CONSERVATIVE: Military tactical maneuvers normally remain within 12 NM of Travis AFB

BE AWARE: Tactical maneuvers may take place anywhere from surface to >10,000' MSL. Climb/Descent rates can be as high as 5,000 - 10,000 feet per minute!

BE VISIBLE: Turn on all available exterior lights

BE VIGILANT: Scan outside for maneuvering heavy aircraft

BE KNOWLEDGEABLE: The Travis IFR radar pattern and VFR overhead pattern are contained within Alert Area A-682

BE SAFE: The best way to fly in/near Travis airspace: **Avoid it**

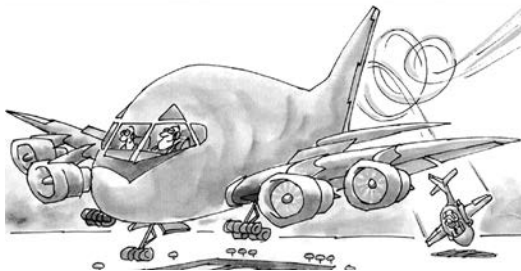
BE SMART: If you have to fly through Travis airspace:

SQUAWK (Mode 3A & Mode C if able)

TALK (It may be optional, but it helps!)

LISTEN (Note potential for conflicts)

CLEAR (Look up and down and all around)



THANK YOU for your cooperation and help in keeping Travis' airspace a safe environment to fly in.

Travis AFB Airfield Information

ICAO KSUU

Location N38°15.76' W121°55.65'

Elevation 63' MSL

Runway 21R/03L 11,001' by 150'

Runway 21L/03R 10,995' by 150'

Assault Landing Zone 21LZ/03LZ 3,500' by 90'

NAVAIDS

SUU TACAN 113x

Runway 21L ILS (CAT II) 110.10

Runway 03L ILS 108.35

Frequencies

ATIS 135.55 / 292.125

Tower 120.75 / 254.4

Approach

North of V150 126.60 / 291.0

South of V150 119.90

***This information is current as of May 2013.
Please check flight publications for any changes.***

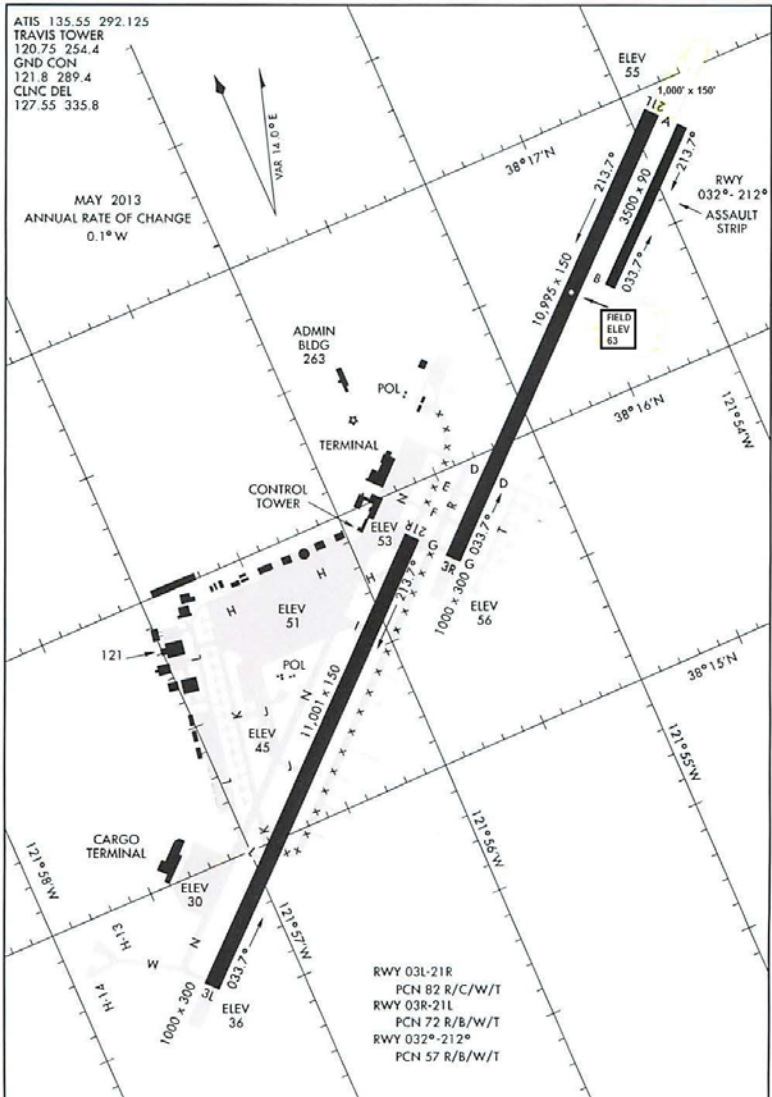
13122

AIRPORT DIAGRAM

AFD-488 [USAF]

TRAVIS AFB (KSUU)

FAIRFIELD, CALIFORNIA



AIRPORT DIAGRAM

FAIRFIELD, CALIFORNIA
TRAVIS AFB (KSUU)