



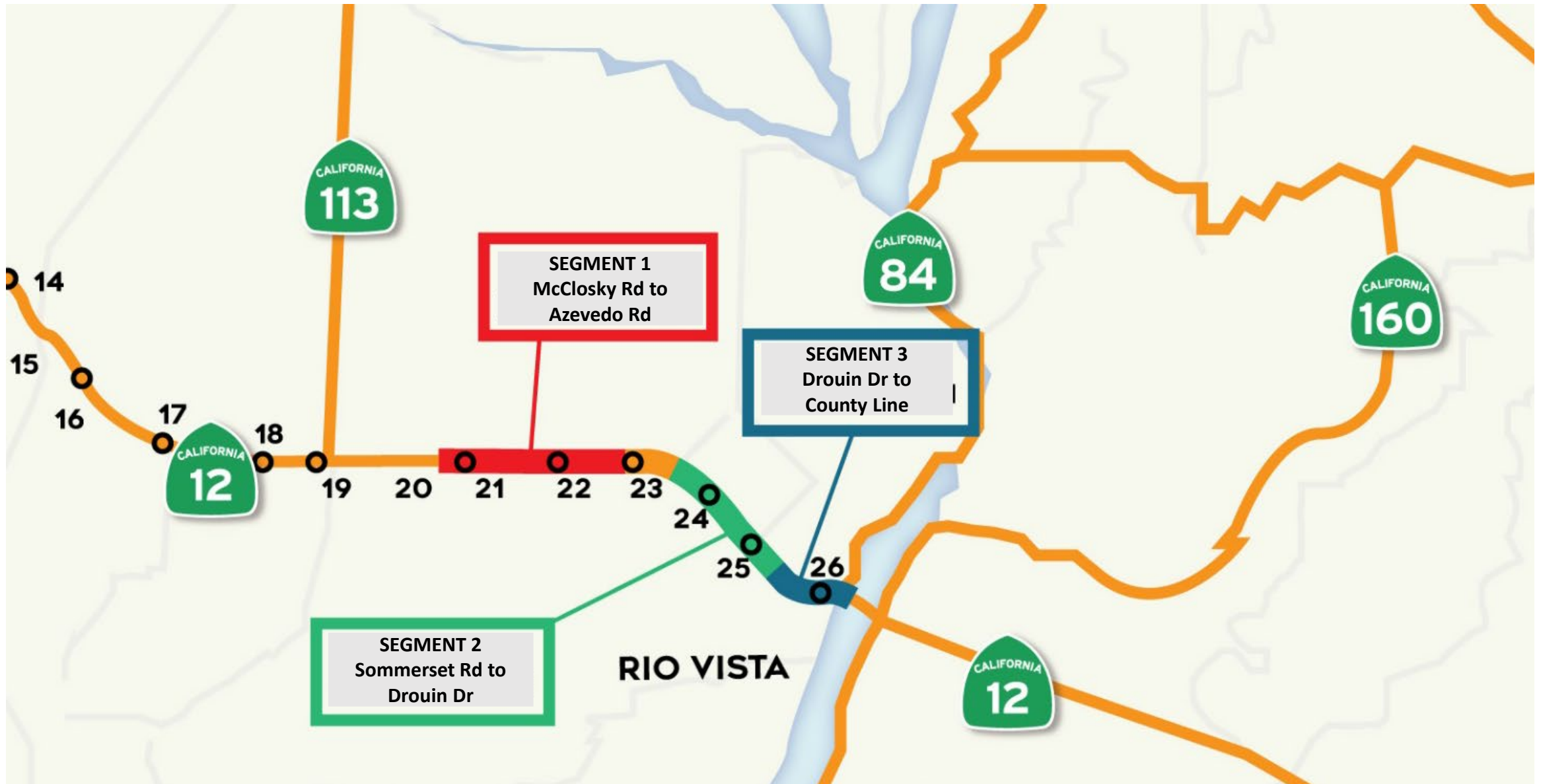
# State Route 12

3R Rehabilitation projects Update

Presented by Caltrans

February 8, 2023

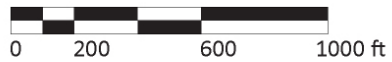
# PROPOSED PROJECT – Resurfacing Restoration Rehabilitation



# SEGMENT 1 – McClosky Rd. to Azevedo Rd. EXISTING CONDITION



# SEGMENT 1 – McClosky Rd. to Azevedo Rd. – Roadway Rehab.



## LEGEND

-  Roadway Resurfacing
-  Caltrans Right of Way

- Rehab Pavement Cracks and Potholes
- Upgrade Guardrails
- Replace Existing Pipe Culverts

# SEGMENT 1 – Funding and Milestones

| CAP COST             | Engr. Estimate |
|----------------------|----------------|
| Construction Capital | \$3.2M         |

| Milestone          | Target Date |
|--------------------|-------------|
| Construction Start | Winter 2022 |
| Construction End   | Fall 2023   |

# SEGMENT 2 – Summerset Road to Drouin Drive. EXISTING CONDITION



## SEGMENT 2 – Summerset Road to Drouin Drive – Safety Enhancements



- Rehab Pavement Cracks and Potholes
- Upgrade Non-Standard Guardrails
- Add Shoulder Backing to Extend Life of Pavement
- Replace Existing Pipe Culverts

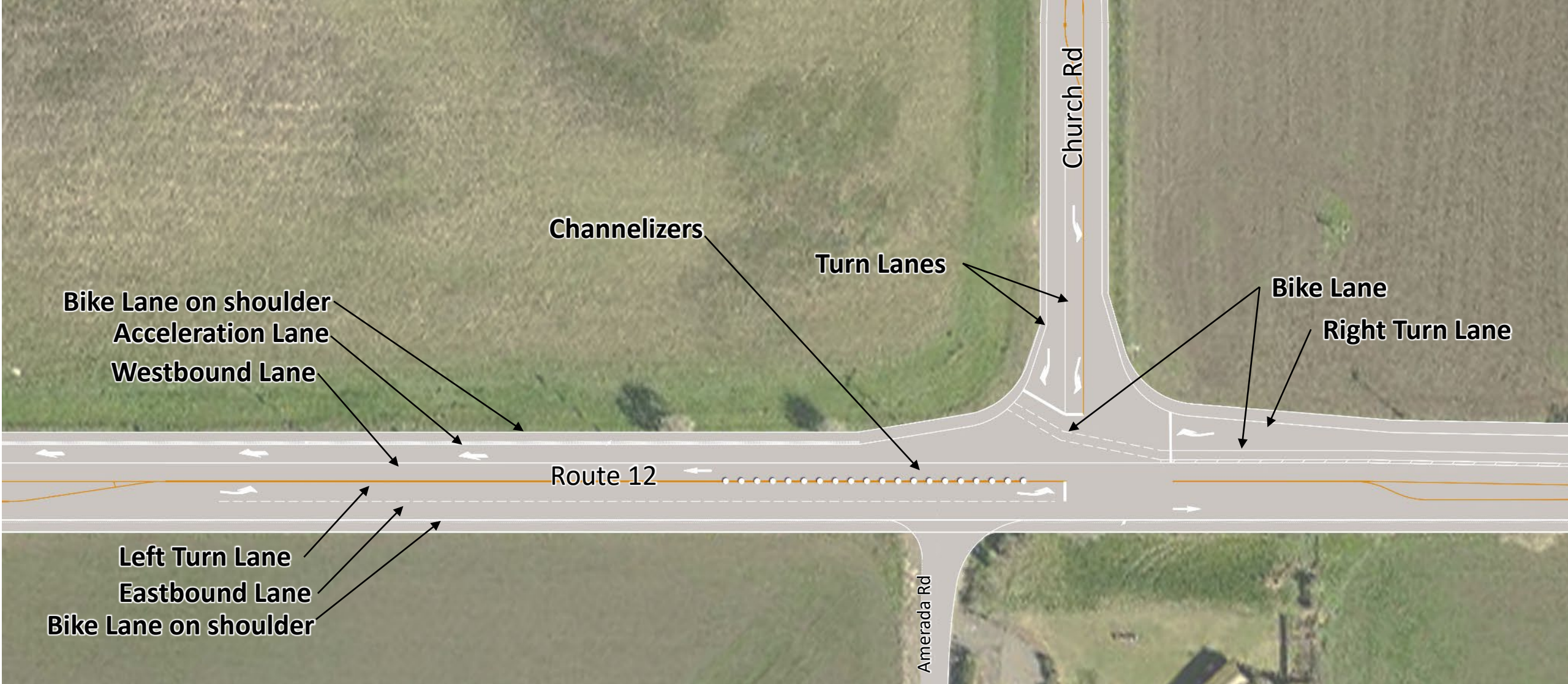
- Widen Shoulders and Travel Lanes to Standard
- Create Bike Lanes within Widened Shoulders
- Improve Sight Distance (Vertical Curve Correction)
- **Church Rd. Intersection Improvements**

# SEGMENT 2 – Summerset Road to Drouin Drive – Safety Enhancements





# Church Road Intersection Improvements



## SEGMENT 2 – Funding and Milestones

| CAP COST             | Engr. Estimate |
|----------------------|----------------|
| Construction Capital | \$30.6M        |
| STA Contribution     | \$1.9M         |

| Milestone          | Target Date |
|--------------------|-------------|
| Construction Start | Summer 2024 |
| Construction End   | Summer 2027 |

# SEGMENT 3 – Drouin Drive to Sacramento County line



- Rehab Pavement Cracks and Potholes
- Address Drainage Issues
- Complete Streets Improvements
  - Install Continuous ADA Accessible Sidewalks
  - Create New Pedestrian Crossing
  - Update Existing Crossings
  - Create Class 4 Protected Bike Lanes
  - Collaborate with City & County to Install Additional Streetscape Improvements

## LEGEND

- Existing sidewalk to be replaced
- - - New sidewalk
- |||| | New/improved pedestrian crossing

- Bus Stop, (location TBD)
- - - Bike Lane Class 2
- Bike Lane Class 4

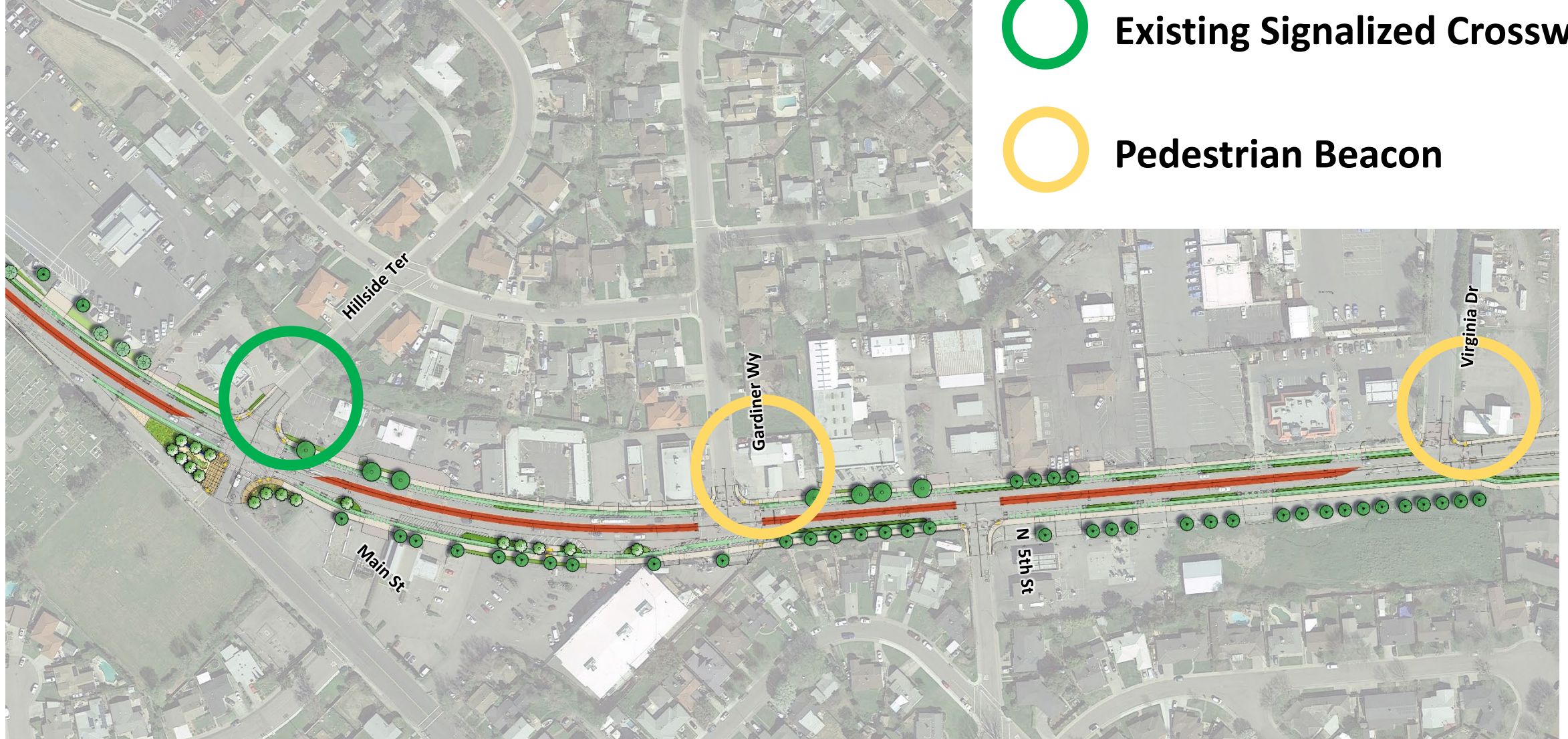
# SEGMENT 3 – 3R & Complete Streets to Transform Downtown Rio Vista

## Opportunities for Improvement:

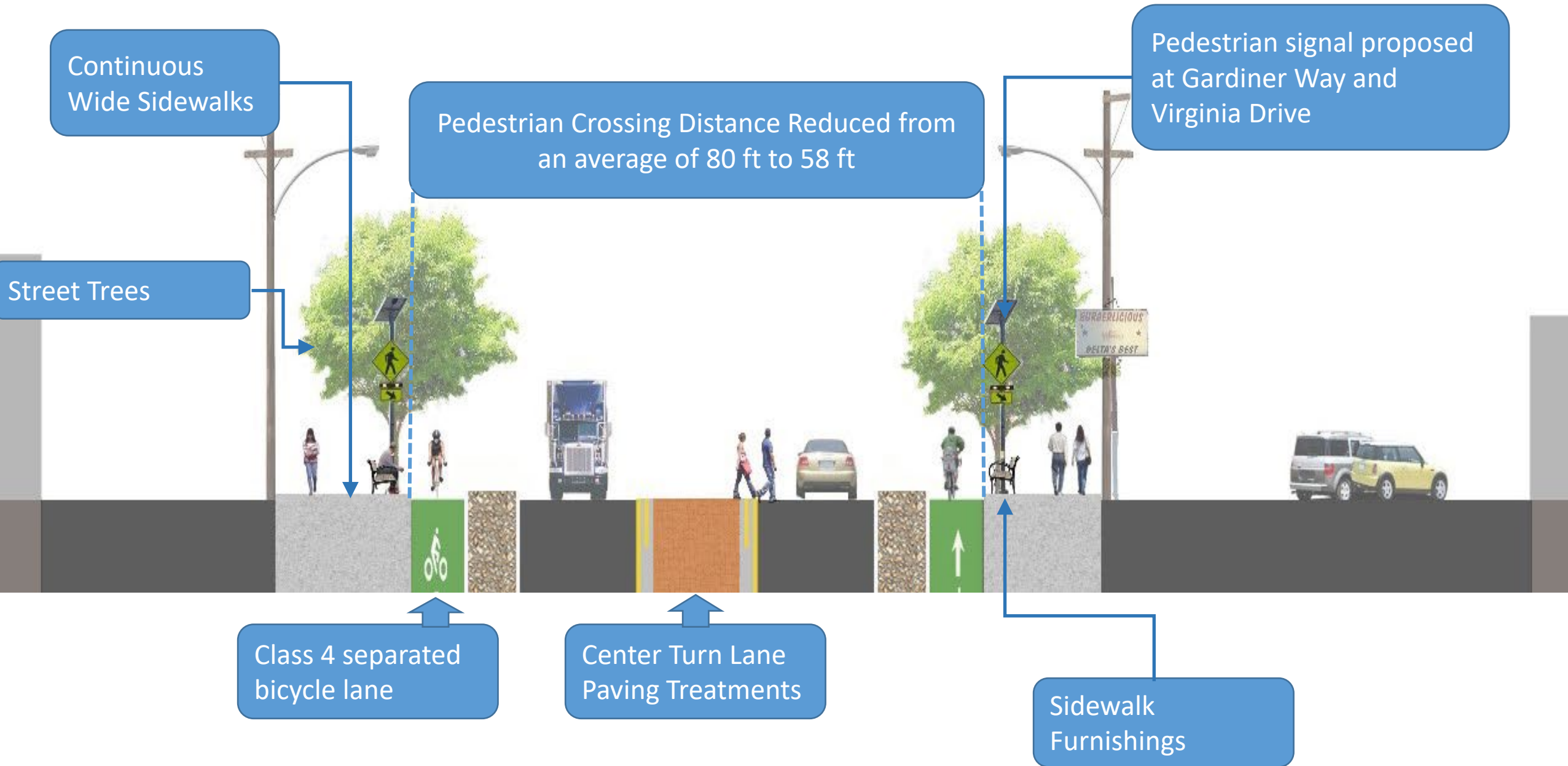
- Roadway:
  - Pavement failure at several locations
  - Nonstandard cross-slopes
  - Existing roadway flooding
  - Excess roadway width
  - Conflicts with Truck traffic
- Pedestrians:
  - Intermittent sidewalks
  - Non-standard widths
  - Curb ramps not all ADA compliant
  - Improvements to crossings needed
- Cyclists:
  - No bike lanes
  - Improvements to crossings needed



# Additional Improvements – Providing Safer Crossings



# SEGMENT 3 – Enhancements and Improvements



# SEGMENT 3 – Proposed Enhancements

## Schematic Plan



# SEGMENT 3 - Improvements + Funding

## Schematic Plan - Detail



Street trees



# SEGMENT 3 - Improvements + Funding

## Schematic Plan - Detail



# Pedestrian Crossings

## Park Space – Hillside Terrace



# SEGMENT 3 – Funding and Milestones

| CAP Cost                 | Engr. Estimate |
|--------------------------|----------------|
| Construction Capital     | \$14M          |
| STA Contribution         | \$1M           |
| City of Rio Vista Contr. | \$400K         |

| Milestone          | Target Date |
|--------------------|-------------|
| Construction Start | Summer 2025 |
| Construction End   | Summer 2027 |

# Questions or Comments

Caltrans Public Information Officer: Vince Jacala  
(510) 286-5206 [vince.jacala@dot.ca.gov](mailto:vince.jacala@dot.ca.gov)