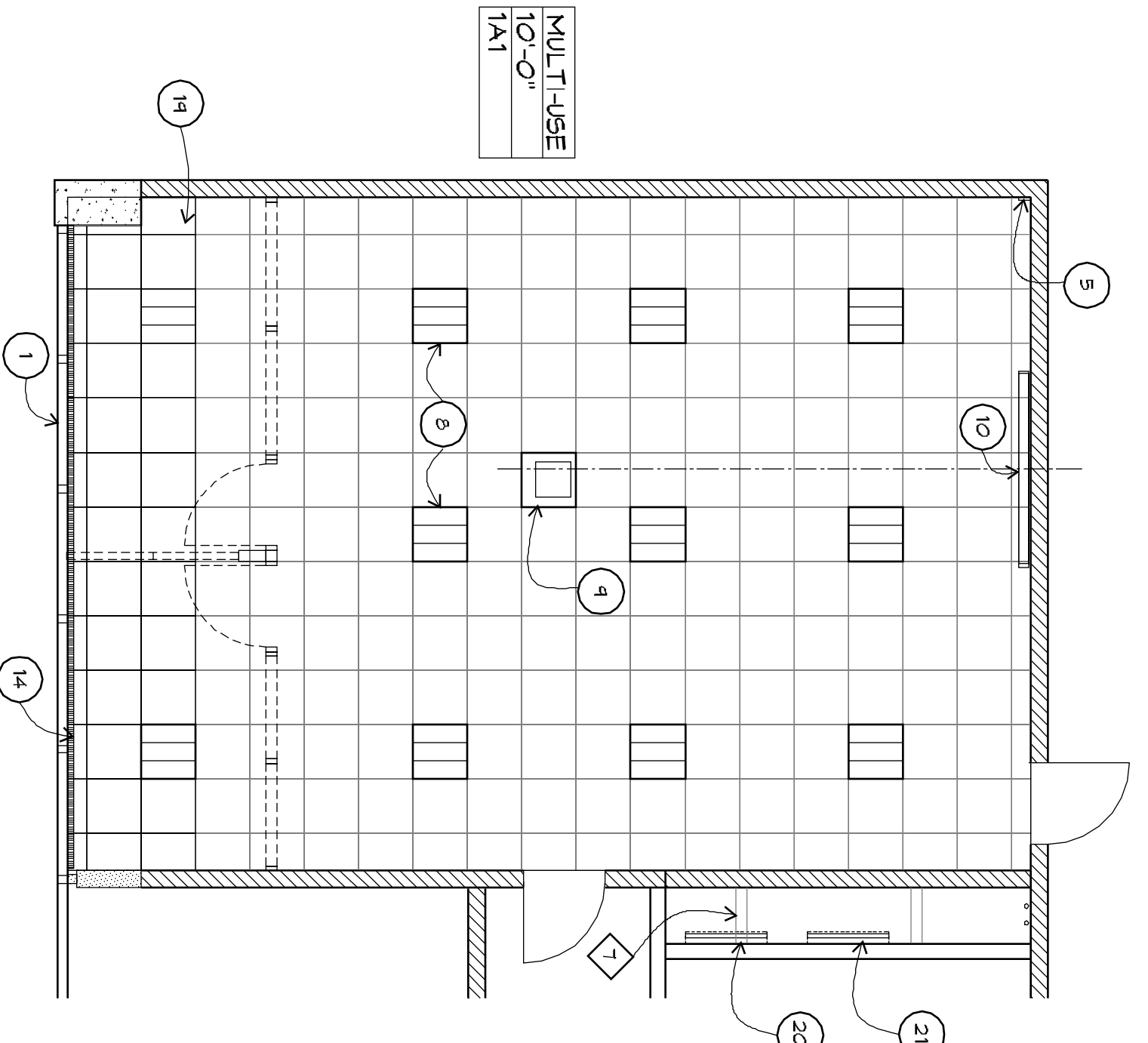


**KEY NOTES:**

- 1 NEW EXTERIOR WALL MULT-USE + CHIEF'S ROOM
- 2 (E) TO BE REMOVED (N) HYBRID ROCKROSE, BLUE RESQUE
- 3 DECOMPOSED GRANITE
- 4 TWO WORK STATIONS, CABINETS
- 5 W/REMODEL, 3000 TWO PIECE RESTROOM WALLS 48" x 60"
- 6 MULTIPLE CHANNEL KITCHEN, SEE SHEET E-2
- 7 NEW KITCHENETTE CABINETS, TV STORAGE
- 8 SINK, MICROWAVE + CONVENTION
- 9 FLOORING
- 10 LIGHTING, SEE (A) (A) (A)
- 11 CEILING MOUNTED PROJECTORS ON LIFT, SEE (A) (A)
- 12 CEILING MOUNTED ELECTRIC SCREEN
- 13 POPDUM
- 14 WHITEBOARD
- 15 FLAT SCREEN
- 16 VERTICAL BLINDS
- 17 BOOK SHELF EXTENSION
- 18 HAN OPERATOR STATION
- 19 GENERATOR PAD, SEE (A) (A)
- 20 BOLLARDS, SEE (A) (A)
- 21 CEILING EXTENSION
- 22 PATCH CEILING @ REMOVED WALLS
- 23 UNDER CABINET LIGHTING
- 24 CEMENT COMPOSITION PANELS
- 25 ALUMINUM WINDOWS
- 26 (E) CEMENT PLASTER

**DEMOLITION NOTES:**

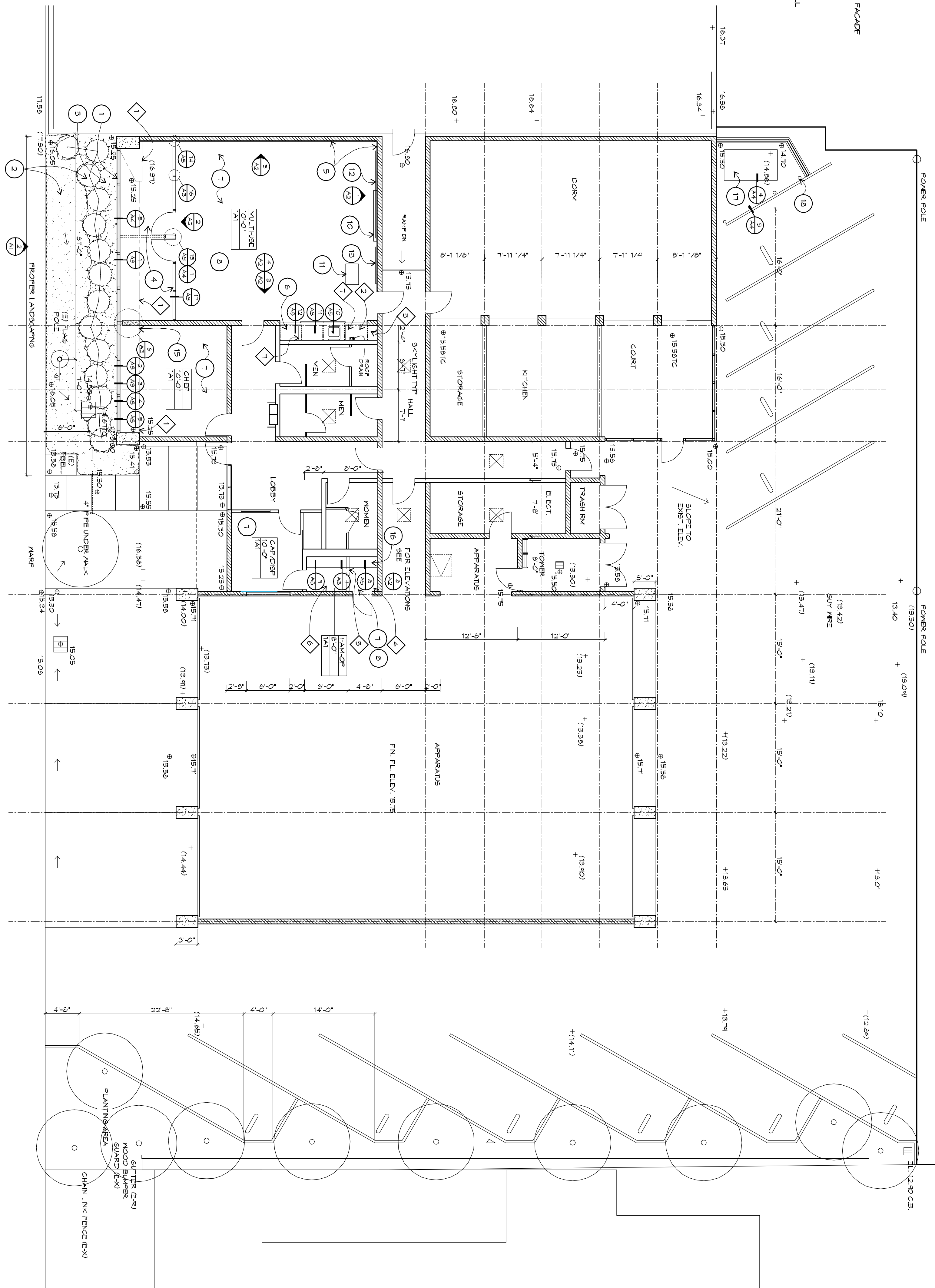
- 1 REMOVE (E) STOREFRONT W/ PLYWOOD SURFACE FACADE
- 2 REMOVE (E) CABINET W/ FIXTURES
- 3 REMOVE (E) WATER HEATER
- 4 REMOVE (E) WATER HEATER
- 5 REMOVE (E) WATER HEATER
- 6 REMOVE (E) WATER HEATER
- 7 REMOVE (E) WATER HEATER
- 8 REMOVE (E) WATER HEATER
- 9 REMOVE (E) WATER HEATER
- 10 REMOVE (E) WATER HEATER
- 11 REMOVE (E) WATER HEATER
- 12 REMOVE (E) WATER HEATER
- 13 REMOVE (E) WATER HEATER
- 14 REMOVE (E) WATER HEATER
- 15 REMOVE (E) WATER HEATER
- 16 REMOVE (E) WATER HEATER
- 17 REMOVE (E) WATER HEATER
- 18 REMOVE (E) WATER HEATER
- 19 REMOVE (E) WATER HEATER
- 20 REMOVE (E) WATER HEATER
- 21 REMOVE (E) WATER HEATER
- 22 REMOVE (E) WATER HEATER
- 23 REMOVE (E) WATER HEATER
- 24 REMOVE (E) WATER HEATER



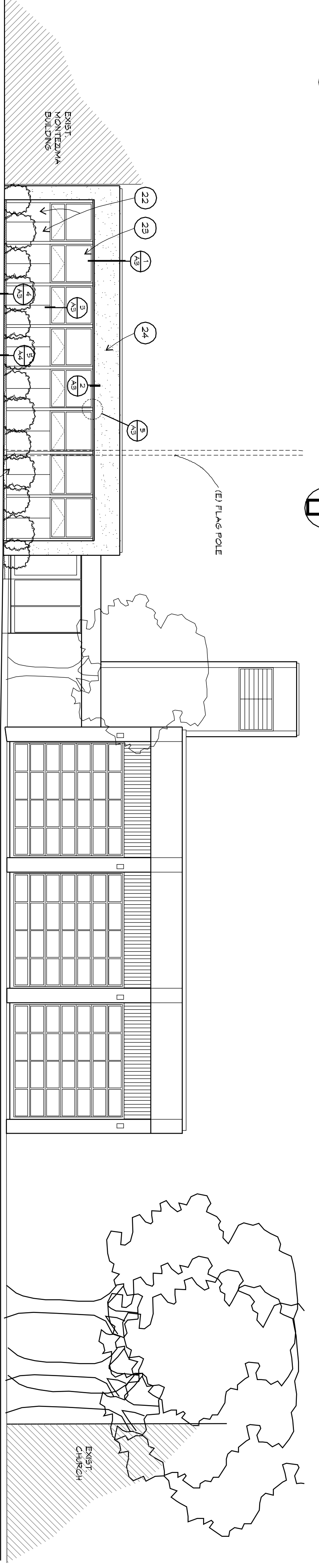
**3 REFLECTED CEILING PLAN MULT-USE**  
SCALE: 9/16" = 1'-0"

FLOOR/BASE	WALL/WAINSCOT	CEILING
1 CARBET TILE/ RUBBER BASE	(E) CARBET GYP BD	1 ACoustIC PANEL
2 VINYL FLOOR/ RUBBER BASE		2 (E) GYP BD

**4 ROOM MATERIALS CODE LIST**  
NOT TO SCALE



**1 SITE IMPROVEMENT PLAN**  
SCALE: 1/8" = 1'-0"



**2 FRONT ELEVATION**  
SCALE: 1/8" = 1'-0"

**A1**

SHEET REFERENCE:  
DEMOLITION NOTES, SITE IMPROVEMENT PLAN, FRONT ELEVATION, REFLECTED CEILING PLAN MULT-USE ROOM, MATERIAL CODE LIST  
DATE: 24 JANUARY 2012

**RIO VISTA E.O.C. REMODEL**  
RIO VISTA EMERGENCY OPERATION CENTER  
350 MAIN STREET, RIO VISTA, CA 94571  
CITY OF RIO VISTA CITY HALL  
1 MAIN STREET, RIO VISTA, CA 94571



Revisions:

**GUTIERREZ / ASSOCIATES**  
architects  
1616 Franklin St., Ste. 202  
Oakland, California 94612  
510 839-3311

